

**MANITOBA METIS FEDERATION – MATRIX
SOLUTIONS INC. PARTNERSHIP**

INDIGENOUS CONSTRUCTION MONITORING

WEEKLY REPORT

SPREAD 7

AUGUST 20TH TO AUGUST 25TH

1. PURPOSE OF THIS REPORT

The report is a weekly summary of the daily reports submitted by the Indigenous Construction Monitors that are working on spread seven. The social and cultural findings have been tabulated with locations and mitigation measures below. A summary of the construction activities has been summarized for the weeks of August 20th to August 25th, 2018.

Social and Cultural Features

Field Observation	# of occurrences	Description and Mitigation Measures	Mitigation Status	Further Action Required (Yes/No)
Traditional Use Area (hunting, fishing, gathering, trapping)	N/A			
Rock Formations (rocks of significance, tipi rings, etc.)	N/A			
Artifacts	N/A			
Bones	N/A			
Potential Gravesites	N/A			

Environmental Features

Field Observation	# of occurrences	Description and Mitigation Measures	Mitigation Status	Further Action Required (Yes/No)
Medicinal or Cultural Plants	N/A			
Aquatic Life	N/A			
Animal Observations or Burrows	N/A			
Bird Nests	N/A			
Trees (Red Willow)	N/A			
Wetlands	N/A			
Watercourse Crossing	1	Excavation of Black Creek		

		river bed.		
--	--	------------	--	--

Additional Observations and Summary of Activities or Concerns

On August 20th, safety theme identified: slips, trips, falls, wildlife. Weather forecast, +24, advisory due to smoke. Monitoring the line at RD4, geotech was being installed at SSKP 812+760.6, equipment was moving topsoil on the rightaway; RD6 banister was clearing and building access ramp and approach, laying down geotech on the approach at 816+700; RD17 they were stripping and clearing topsoil, south side at 824+401.7, equipment was one dozer, one excavator; RD17 north side, laying down geotech for road access and building a ramp, all four locations were clean and organized. Work forecast: monitor the line in the morning.

On August 21st, safety theme meeting at RD6, dust farmers cattle and wildlife. Weather forecast, +20, cloudy. RD6 monitored at 816+700, geotech being installed for approach on south side, ready for topsoil; RD5 dozer being washed at 816+000; RD4 equipment stripping topsoil, soil was in boundaries of the stake 813+200; RD20 building a hot line approach, geotech was layed down and padding on top of the geotech, 2 dozers, 1 excavator on site, 826+000; Work forecast: return to boneyard to monitor the line

On August 22nd, safety themes, sign on tailgate RD63, dust, wildlife. Weather forecast, +28, dusty. RD5 monitoring the big truck wash station at 816+000 on the right a way, washed at the station was dozers, bus, excavator; RD6 two dozers pushing up topsoil in a pile location 816+700 SE; RD7 monitor one john deere tractor breaking ground at 816+800, excavator moving soil by fence line; water truck was also onsite putting water down for road dust control; RD63 dozers stripping topsoil going East at 904+338 SE; Work forecast: return to the line.

On August 23rd, safety themes were wildlife, school bus, medics, talked about going to close to hot lines; Weather forecast, +29, heat warning; SF5 open ditch for the bore crew at 816+062; SF6 8 dozers, 1 grader, 1 excavator were stripping the top soil at 816+900; SF17 ramping up hot lines at 824+763 SE and the approach was built at this location; SF18 removing the top soil at 824+800 SE; Badger water trucks are doing dust control on every site; Work forecast: return to the line in the morning.

On August 24th, safety themes was garbage, uneven ground, slopes, slow driving; Weather forecast, +24, smokey, dry and dusty; SF27 rare plant (sand bluestem) in area 838+132, plant area was staked with 10m of buffer to identify the location; SF26 rare plant (American lopseed) in area 835+300, plant area was staked with 10m of buffer to identify location; SF26 heritage site location 835+100; S24 & S25, worker picking up water bottle; Work forecast: understanding more about the alignment sheets.

August 25th, slips, trips, falls, wildlife, dusty roads; Weather forecast, +24, windy, overcast; Monitor KP 831+700, the Blite nesting colony within 750m (WF 160) took photo access plug; Between 831+300 to 831+200 took photos of leopard frog; Work forecast, access the line on Monday.

Photos of Sites Visited & Topics Discussed This Week

August 20, 2018

Photo



Description & Location:

Photo facing south side.
Clearing top soil.
(824+300)

Photo



Description & Location:

photo facing east to west

August 21, 2018

Photo



Description & Location:

West and East (816+000)

August 22, 2018

Photo



Description & Location: KP 816+000

photo facing SE
Cleaning/Disinfecting bus

Photo



Description & Location: KP 816+000

photo facing SE
Dozer heading down ROW

August 23, 2018



Description@location: KP 824+763

Ramping hot lines
photo taken facing SE

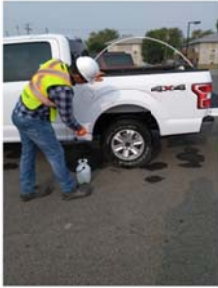


Description @ location: KP 816+000

Badger water truck watering the road
Photo taken facing SE

August 24, 2018

Photo



Brandon CO-OP

Clean and disinfect truck

Photo



KP 835+300

American Lopseed

August 25, 2018

Photo



KP 831+200-831+300

Northern Leopard Frog
Observed on the row


Photo



831+700

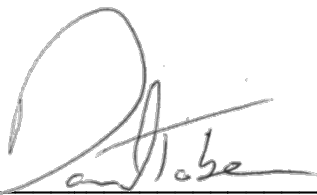
The Blite Nesting Colony

APPROVALS



Arnold Breland
Construction Monitor

August 29, 2018
Date



Daniel Tober
Senior Environmental Scientist

August 29, 2018
Date